



**Automating
the World**

BUILDING MANAGEMENT SYSTEM

2025/6/10

MITSUBISHI ELECTRIC CORPORATION

COPYRIGHT © 2022 Mitsubishi Electric. ALL RIGHTS RESERVED. ALL TRADEMARKS ACKNOWLEDGED.

1

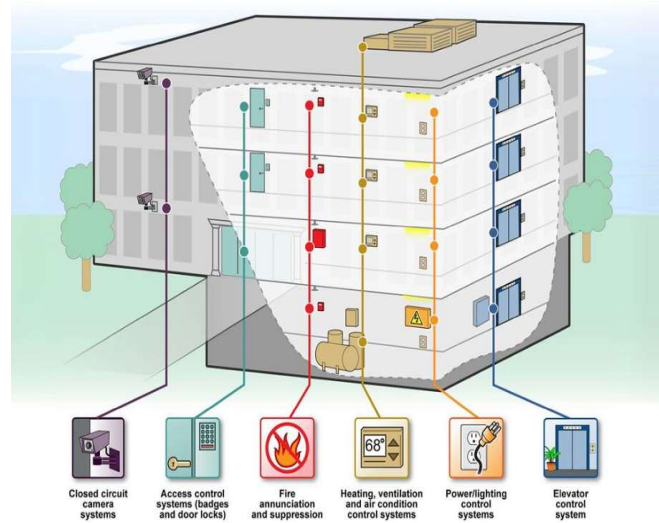
BMS Fundamentals

1. What is BMS?
2. Why building need BMS?
3. What benefits BMS brings?
4. BMS components
5. Open Protocols (BACnet, Modbus, KNX, LonWorks, Niagara, oBIX)

1.What is BMS?

BMS stand for Building Management Systems

- Control, monitor and manage various devices and systems to optimize building operations, such as heating, ventilating and air conditioning (HVAC) systems.
- In many case a BMS can include Lighting, Security, Fire Alarm, Elevator and more.



Acronyms

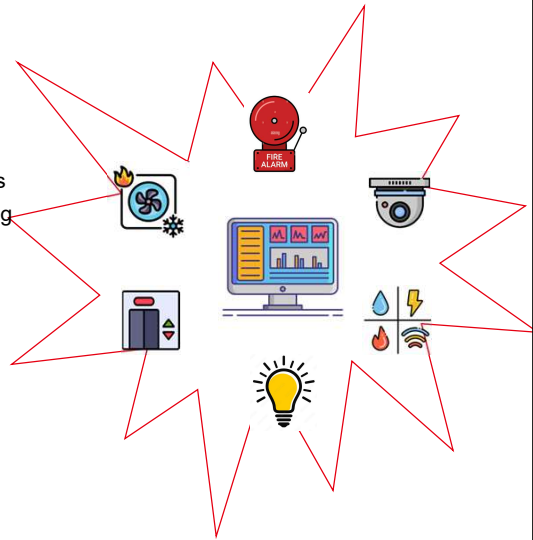
Other names for BMS systems

- | | |
|--------|--------------------------------------|
| • BAS | Building Automation System |
| • BCS | Building Control System |
| • BMS | Building Management System |
| • BMCS | Building Management & Control System |
| • DDC | Direct Digital Control |
| • EMS | Energy Management System |
| • EMCS | Energy Management & Control System |
| • FMS | Facility Management System |
| • FMCS | Facility Management & Control System |
| • BMES | Building Energy Management System |

2. Why building need BMS?

BMS stand for Building Management Systems

- A Building Management System (BMS) is valuable because it centralizes control and monitoring of building systems, optimizing efficiency, reducing costs, and improving occupant comfort.
- By integrating various functions like HVAC, security, and energy management, a BMS streamlines operations, leading to energy savings, enhanced maintenance, and improved building performance.



3. What benefits BMS brings?

Provides a building owner or property manager the ability to:

- View and record HVAC information (temperature, humidity, pressure, and HVAC plant status) in a building.
- Act on the information in a proactive manner to control building tenant comfort.
- Perform facility management (generate reports, graphs and annunciate alarms when there is a problem).
- Perform energy management scheduling and strategies to reduce operating and energy costs.
- Inter-connect building systems (fire alarm, security) in order to integrate building functions.



4. BMS components

Monitoring

Monitoring values from all sorts of connected systems



Trending

Showing graphs of building parameters and their correlation within local systems



Alarming

Alarms and notifications sent to building maintenance and facility management teams



Controlling & Scheduling

Scheduling and energy efficient control of HVAC equipment is a key function



Optimizing

Knowledge about building performance helps in Energy optimization



Integrated Building Functions

Connectivity to other building systems such as lighting, meters, security, fire alarm and CCTV to optimize energy consumption



Automating the World

COPYRIGHT © 2022 Mitsubishi Electric. ALL RIGHTS RESERVED. ALL TRADEMARKS ACKNOWLEDGED.

7



5. Open Protocols

BACnet

BACnet | Building Automation & Control Network
Officially unveiled by ASHRAE in 1996
Approved as ISO standard 16454-5
Becoming a standard in the European Union



Modbus

Modbus | Serial communications protocol
Originally published by Modicon (now Schneider Electric) in 1979 for use with its programmable logic controllers (PLCs)



Niagara

The **Niagara Framework** | is a universal software infrastructure that allows building controls integrators, HVAC and mechanical contractors to build custom, web-enabled applications.



KNX

KNX | is an open standard for commercial and domestic building automation. KNX devices can manage lighting, blinds and shutters, HVAC, security systems, energy management, audio video, white goods, displays, remote control



LonWorks

LonWorks | Local Operating Network
Networking platform specifically created to address the needs of control applications. The platform is built on a protocol created by Echelon



oBIX

oBIX | (for Open Building Information Exchange) is a standard for RESTful Web Services-based interfaces to building control systems. oBIX is about reading and writing data over a network of devices using XML and URIs, within a framework specifically designed for building automation.



Automating the World

COPYRIGHT © 2022 Mitsubishi Electric. ALL RIGHTS RESERVED. ALL TRADEMARKS ACKNOWLEDGED.

8



Benefits of Open Systems

ENERGY MANAGEMENT

Decrease in Energy Consumption

- Reduce kWh Energy Consumption
- Reduce Carbon Footprint

25-40%

ASSET MANAGEMENT

Decrease Asset Service Costs

- Reduction in Asset Service Costs
- Improve Asset Availability
- Improve MTBR

30-40%

OPERATIONAL EXCELLENCE

Reduction in fault detection time

- Focus on Prioritized Faults
- Reduce First Time Fix Rate
- Reduce Fault Diagnostics Lead Time

5-10%

WORKSPACE UTILIZATION

Improve Space Utilization and Comfort

- Improve Space Cost per person
- Improve Space Comfort Index
- Improve Peak/Average Occupancy
- Utilization of Collaboration spaces

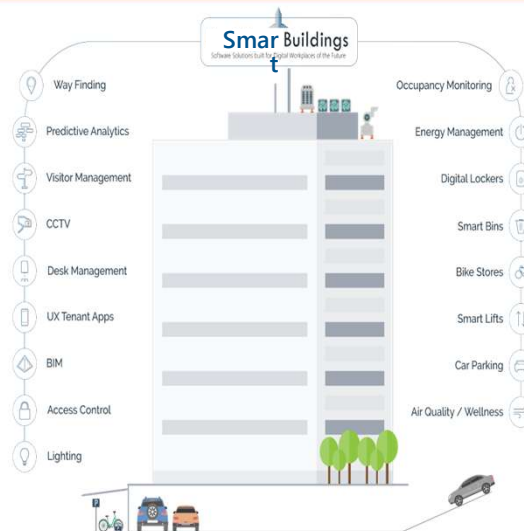
15-25%

Normalization of Equipment & Properties
Data Aggregation & Integration

Automating the World

COPYRIGHT © 2022 Mitsubishi Electric. ALL RIGHTS RESERVED. ALL TRADEMARKS ACKNOWLEDGED.

9



Automating
the World

Smart Building Solution

GENESIS64 & DIAMOND CONTROLS MITSUBISHI added to Smart Building portfolio

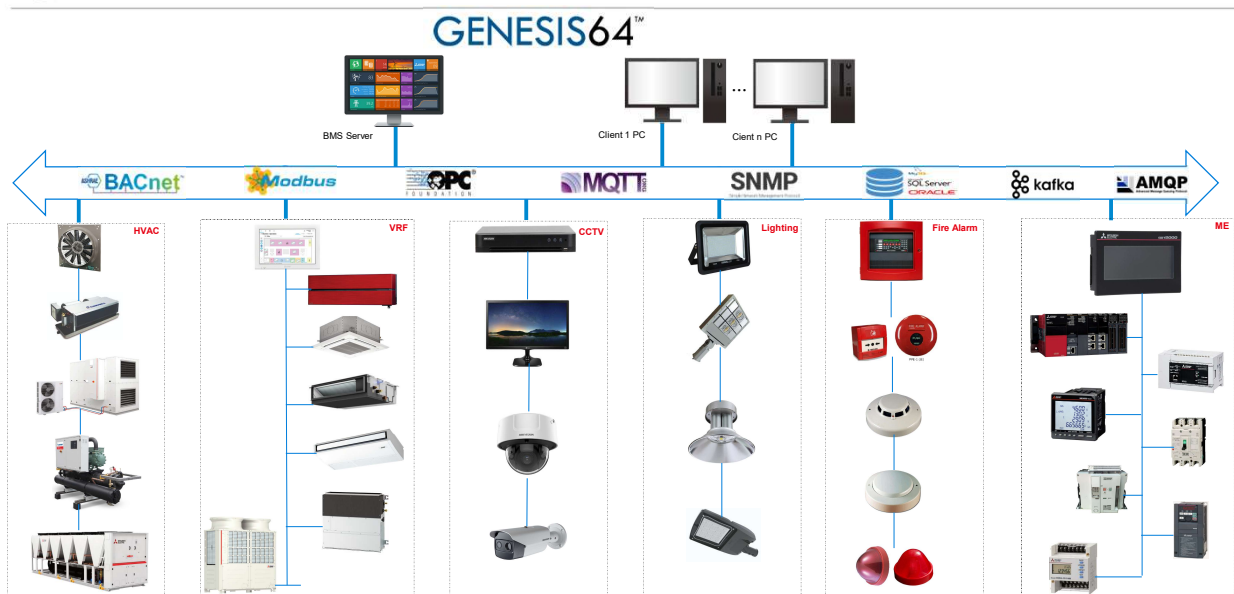
COPYRIGHT © 2022 Mitsubishi Electric. ALL RIGHTS RESERVED. ALL TRADEMARKS ACKNOWLEDGED.

10

Agenda

1. System Architecture
2. Hardware Features
3. Software Features
4. Typical Control Graphics
5. Project References

1. System Architecture





2. Hardware Features

What is Niagara?

Niagara Framework

Framework for integrating all standard network protocols (LonWorks, BACnet, Modbus, oBIX etc.) used in existing building management system developed by Tridium, USA.



- 1997 Tridium, Inc., founded
- 1999 Niagara Framework launched
- 2000 Strategic partners included with Honeywell, Schneider
- 2005 Honeywell acquired Tridium (100% capital subsidiary)
- 2006 Niagara Central launched
- 2008 achievement achievement of 100,000
- 2000 achievement achievement of 200,000
- 2012 achievement achievement of 300,000
- 2015 achievement achievement of 500,000
- 2023 Mitsubishi Electric Asia partners with Tridium APAC to launch Diamond Controls product range.



Automating the World

COPYRIGHT © 2022 Mitsubishi Electric. ALL RIGHTS RESERVED. ALL TRADEMARKS ACKNOWLEDGED.

13



Niagara Hardware?

DCM 9000 Controller



Agency Certifications

- UL 916
- FCC part 15, class b
- China ROHS
- C-UL
- RoHS
- Open Energy
- CE EN 61326-1:2013
- REACH
- Management Class
- RCM
- WEEE

HARDWARE SPECIFICATIONS

NXP iMX8M+ Quad Core CPU
2GB LPDDR4 RAM
Removable 8GB micro-SD card
Wi-Fi (Client or WAP) <ul style="list-style-type: none"> • Wi-Fi 5 (802.11ac) • 1x1 802.11 a/b/g/n/ac • Configurable radio (Off, WAP, or Client) • WPA2PSK/WPA2PSK supported
USB type C connector <ul style="list-style-type: none"> • Debug port
(2) isolated RS-485 with selectable bias and termination
(2) 10/100/1000MB Ethernet ports
Secure boot
*Supply requirements: 24VAC rated at 24VA minimum, or 24VDC rated at 1A (24W) minimum
Runs Niagara 4: 4.13 and later
Real-time clock
Batteryless

Automating the World

COPYRIGHT © 2022 Mitsubishi Electric. ALL RIGHTS RESERVED. ALL TRADEMARKS ACKNOWLEDGED.

14

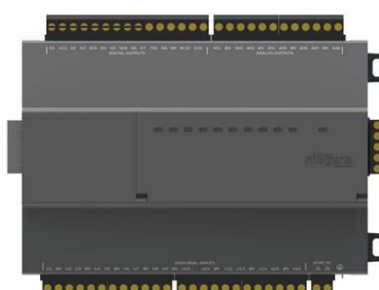
Expansion Modules – IO-R-16 & IO-R-34

IO-R-16



Input/ Output
8UI, 4DO, 4AO

IO-R-34

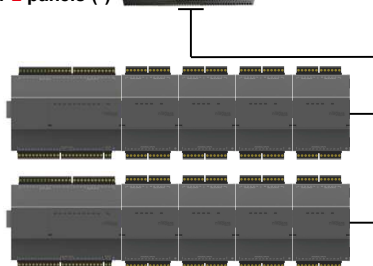


Input/ Output
16UI, 10DO, 8AO

- **Connect:** (1) DCM9000 module can expand up to (8) IO-R-34s or (16) IO-R-16s
- **Power:** (1) IO-R-34 can power (4) IO-R-16 modules

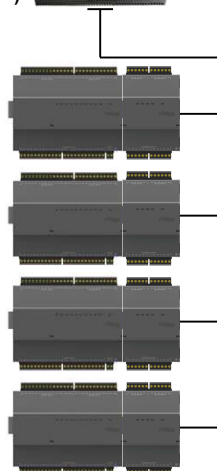
Common Configurations

Maximum
configuration
for 2 panels (*)

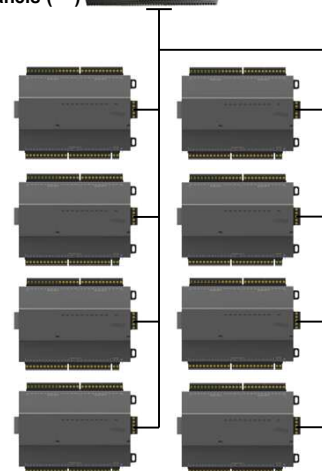


Shown with maximum of 4 IO-R-16s
per IO-R-34

Maximum
configuration
for 4 panels (**)



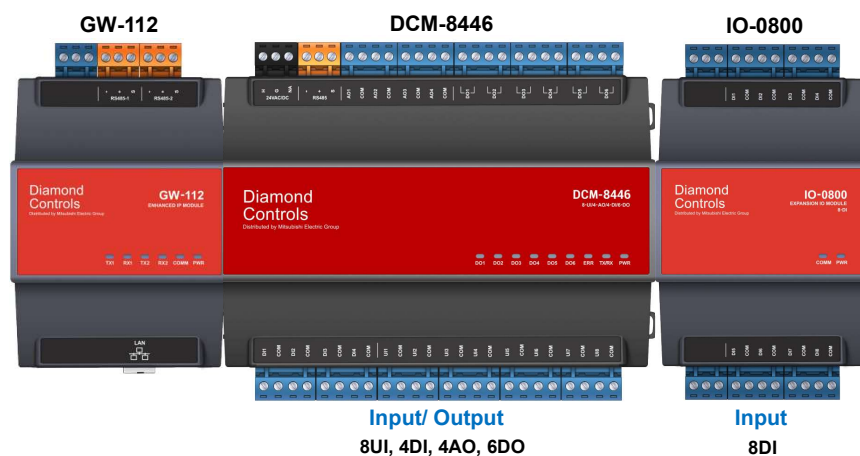
Maximum
configuration
for 8 panels (***)





DCM HVAC Controller

DCM-8446 Controller - Direct Digital Controller



Functions or IO point counts of **DCM-8446** is extendable through **right-sided slot** with different modules. It can be applied with **IO-0800**, **IO-6020**, whereas its **left-sided slot** can be extended with **GW-112**.

Automating the World

COPYRIGHT © 2022 Mitsubishi Electric. ALL RIGHTS RESERVED. ALL TRADEMARKS ACKNOWLEDGED.

17

Simple yet Open

❖ ARM Cortex 32-bits

Processor

❖ Fully Programmable

❖ Operate Independently

❖ HVAC Logic Calculation

❖ Login Password Protection

❖ Alarm Handler

Combination

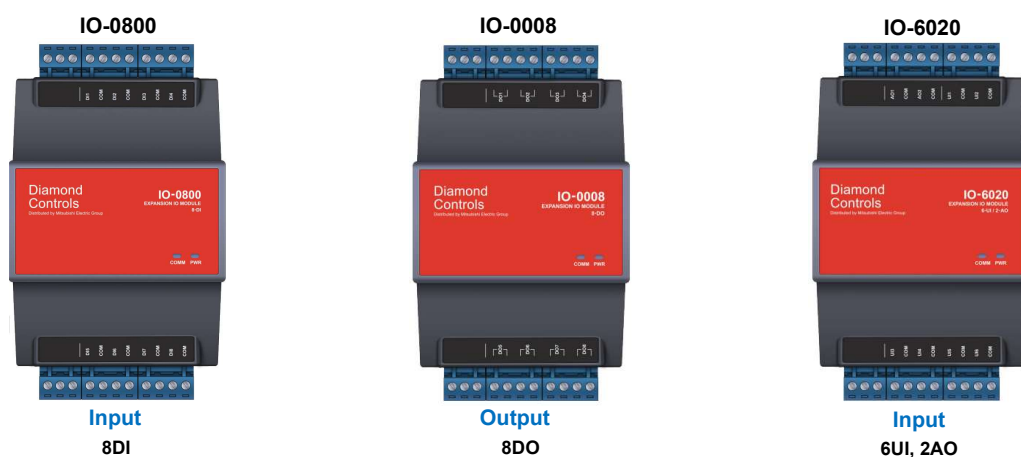
❖ Timer Program

❖ Built-in Real-time Clock

❖ Mathematical and Logical Calculation



Remote IO Module



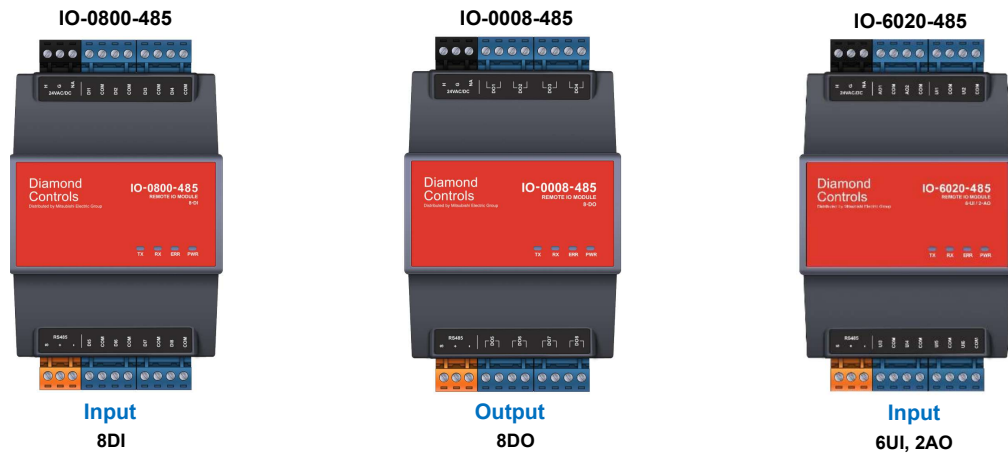
Automating the World

COPYRIGHT © 2022 Mitsubishi Electric. ALL RIGHTS RESERVED. ALL TRADEMARKS ACKNOWLEDGED.

18

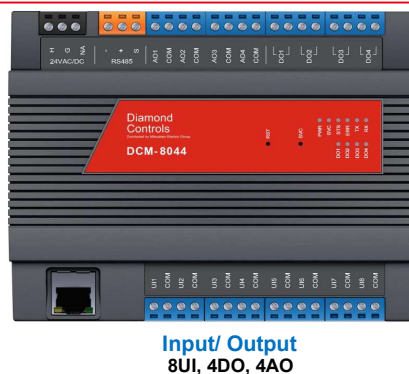


Remote IO Module-**RS485**



DCM HVAC Controller

DCM-8044 Controller - Direct Digital Controller



Features:

- **Certifications:** CE, FCC, BTL
- Build in Battery for RTC
- Can be used as- Modbus Master, Modbus Bridge, BACnet Router gateway
- Supports basic APM programming
- When used as Modbus Master, it can only support max 4 devices (Only DCM-8446, IO-0008-485, IO-0800-485 and IO-6020-485 are supported)



DCM HVAC Controller

DCM-8044-D Controller - Direct Digital Controller



Input/ Output
8UI, 4DO, 4AO

Features:

- **Certifications:** CE, FCC, BTL
- LCD Display
- Build in Battery for RTC
- Can be used as- Modbus Master, Modbus Bridge, BACnet Router gateway
- Supports basic APM programming
- When used as Modbus Master, it can only support max 4 devices (Only DCM-8446, IO-0008-485, IO-0800-485 and IO-6020-485 are supported)

Automating the World

COPYRIGHT © 2022 Mitsubishi Electric. ALL RIGHTS RESERVED. ALL TRADEMARKS ACKNOWLEDGED.

21



Expansion Modules – IO-V6002 & IO-V0800



Input/ Output
8UI, 4DO, 4AO



Input/ Output
6UI, 2DO



Input/ Output
8DI

- **Connect:** (1) IO-V6002 or (1) IO-V0800 module can be connected to the right of DDC-V8044/V8044-D
- **Power:** Power will be drawn directly from DDC-V8044

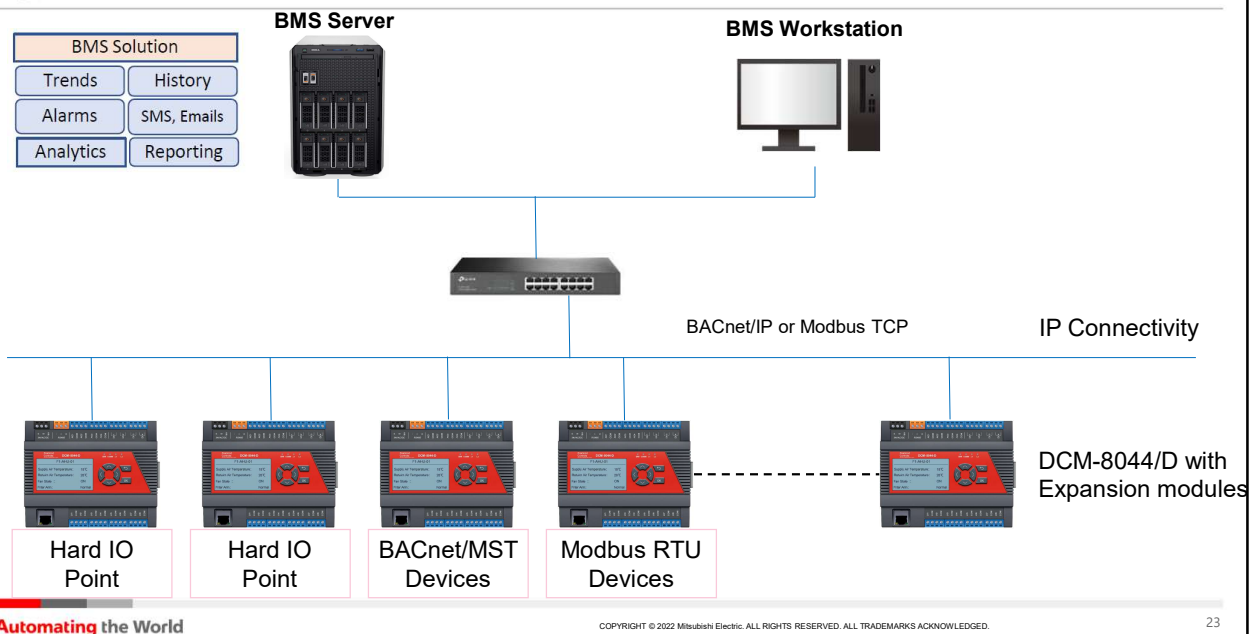
Automating the World

COPYRIGHT © 2022 Mitsubishi Electric. ALL RIGHTS RESERVED. ALL TRADEMARKS ACKNOWLEDGED.

22



BMS ARCHITECTURE



23



3. Software Features

In May 2019...

MITSUBISHI ELECTRIC CORPORATION
PUBLIC RELATIONS DIVISION
1-5, Minamishinbashi, Chiyoda-ku, Tokyo, 100-8501, Japan

FOR IMMEDIATE RELEASE

No. 282

Customer Inquiries: Factory Automation Systems Group
Mitsubishi Electric Corporation
www.mitsubishi-electric.com/en/support

Media Inquiries: Public Relations Division
Mitsubishi Electric Corporation
pr@corp.mitsubishi-electric.com

Mitsubishi Electric to Acquire ICONICS, Inc. in United States
Will enhance software product lineup to strengthen e-Factory & IT integrated solution

TOKYO, May 13, 2019 – **Mitsubishi Electric Corporation** (TOKYO: 6503) announced today that it will acquire the remaining shares of **ICONICS, Inc.**, a U.S. software company focused on SCADA, IoT, mobile, analytics and cloud software products for the manufacturing, industrial and building automation markets, to make the company a 100% subsidiary within the Mitsubishi Electric Group. Mitsubishi Electric aims to enhance its software product lineup to realize its "e-Factory" technology edge competing by combining its SCADA/IT software-developing capabilities and Mitsubishi Electric's factory automation technology.

The acquisition is subject to regulatory approval and other customary closing conditions, and is expected to close within Mitsubishi Electric's fiscal year ending in March 2020.

Investment Control and Risk Acquisition (ICRA) is a software and hardware with programmable logic controller or other equipment to control a line of goods or other production line.

ICRA is an integrated solution based on factory automation (FA) and information technologies to reduce the total cost of ownership, including maintenance and operating costs.

About ICONICS, Inc.

Company Name	ICONICS, Inc.
Country <td>USA</td>	USA
Address <td>Route 1, Suite 100</td>	Route 1, Suite 100
Location <td>200 Foxborough Boulevard, Foxborough, MA 01935, USA</td>	200 Foxborough Boulevard, Foxborough, MA 01935, USA
Established <td>Since 1986</td>	Since 1986
Business <td>Software development, sales and services of SCADA, IoT and cloud solutions</td>	Software development, sales and services of SCADA, IoT and cloud solutions
Website <td>http://iconics.com/</td>	http://iconics.com/

Background

As the demand increases for data utilization with IoT technology in manufacturing industries, Mitsubishi Electric-based on its e-Factory concept- has been launching software products compatible with the "e-Factory" platform. ICONICS has been developing and offering competitive software products for various business systems, such as industrial automation, and it possesses specialized technology and considerable knowledge for the development of industrial software for SCADA, IoT, mobile, analytics and cloud-based solutions.

1/2

In April 2021...

MITSUBISHI ELECTRIC CORPORATION
PUBLIC RELATIONS DIVISION
1-5, Minamishinbashi, Chiyoda-ku, Tokyo, 100-8501, Japan

FOR IMMEDIATE RELEASE

No. 379

Customer Inquiries: Factory Automation Systems Group
Mitsubishi Electric Corporation
www.mitsubishi-electric.com/en/support

Media Inquiries: Public Relations Division
Mitsubishi Electric Corporation
pr@corp.mitsubishi-electric.com

ICONICS to be Renamed Mitsubishi Electric Iconics Digital Solutions
Will enhance market recognition and sales acquisition under Mitsubishi Electric brand

TOKYO, March 13, 2021 – **Mitsubishi Electric Corporation** (TOKYO: 6503) announced today that **ICONICS, Inc.**, its U.S.-based software subsidiary engaged in the development, marketing and servicing of supervisory control and data acquisition (SCADA) software and cloud applications, will change its name to **Mitsubishi Electric Iconics Digital Solutions, Inc.** effective April 1, 2021. Additionally, three **ICONICS** subsidiaries located in the United Kingdom, Czech Republic and Italy will also be renamed during April.

Unifying the name under the Mitsubishi Electric brand is expected to enhance the company's market recognition and global talent acquisition. Additionally, Mitsubishi Electric will leverage its **Secondo™** digital platform to accelerate the expansion of **ICONICS'** business as well as Mitsubishi Electric's factory automation digital solutions business.

New Company Names

Company Name	New Name	Previous Name
Mitsubishi Electric Iconics Digital Solutions, Inc.	ICONICS, Inc.	ICONICS, Inc.
Mitsubishi Electric Iconics Digital Solutions UK Ltd.	ICONICS U.K. Limited	ICONICS U.K. Limited
Mitsubishi Electric Iconics Digital Solutions Czech s.r.o.	ICONICS Czech s.r.o.	ICONICS Czech s.r.o.
Mitsubishi Electric Iconics Digital Solutions Italy S.r.l.	ICONICS Italy S.r.l.	ICONICS Italy S.r.l.

About ICONICS, Inc.

Country	USA
Company Name	ICONICS, Inc.
President & CEO	Ted Hill
Location	2 Hampshire Street, Suite 300, Foxborough, MA 01935, USA
Established	Since 1986
Business	Development, sales and services of SCADA software and cloud applications

ICONICS Suite™

Automating the World

COPYRIGHT © 2022 Mitsubishi Electric. ALL RIGHTS RESERVED. ALL TRADEMARKS ACKNOWLEDGED.

24



About ICONICS



Headquartered in Foxboro, MA
Since 1986



100+ Countries
400+ Partners



375,000+
Installations Worldwide

Gold
Microsoft Partner



Six-time Microsoft
Partner of the Year



Smart Buildings
and Smart Cities



Discrete Manufacturing
and Factory Automation



Process
Automation



Public and Defense
Infrastructure

Automating the World

COPYRIGHT © 2022 Mitsubishi Electric. ALL RIGHTS RESERVED. ALL TRADEMARKS ACKNOWLEDGED.

25



Automation Software for Any Industry



Automotive



Building Automation



Oil & Gas



Government & Military



Manufacturing



Food & Beverage



Utilities & Energy



Transportation



Materials & Mining



Pharmaceutical



Sustainability



Water & Wastewater

Automating the World

COPYRIGHT © 2022 Mitsubishi Electric. ALL RIGHTS RESERVED. ALL TRADEMARKS ACKNOWLEDGED.

26



50,000+ Buildings Operate with ICONICS



Automating the World

COPYRIGHT © 2022 Mitsubishi Electric. ALL RIGHTS RESERVED. ALL TRADEMARKS ACKNOWLEDGED.

27



Microsoft IIoT Partner of the Year 2022



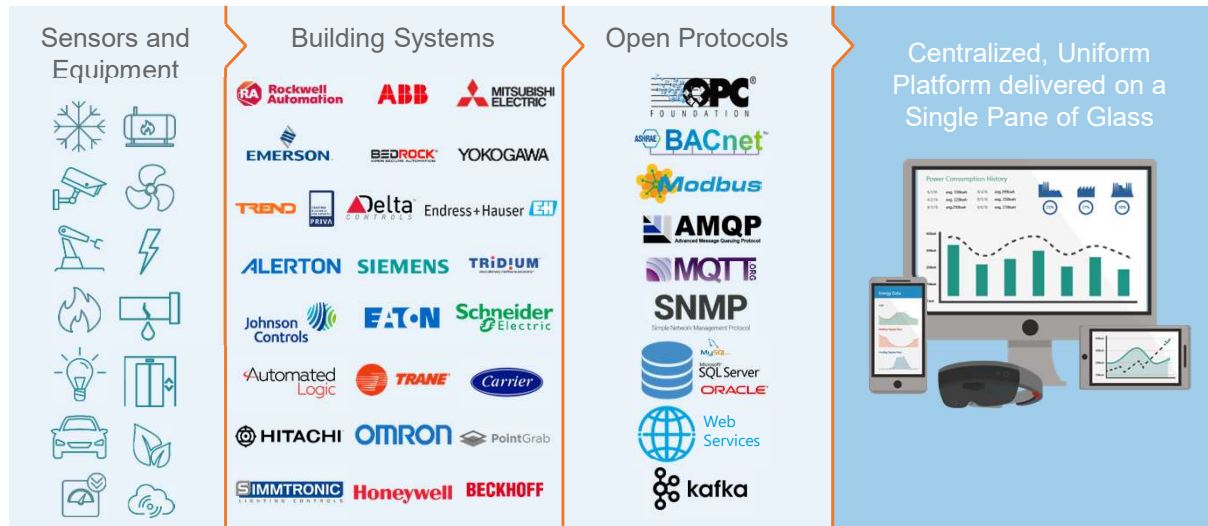
- **Over 30 years** of experience in **automation software** for multiple industries.
- Integrates **IoT technology** with **affordable devices** for secure, **cloud-ready solutions**.
- Supports **energy management**, **building automation**, and **industrial applications**.
- Runs **Microsoft IoT technology** at the edge, **Azure** in the cloud.
- Integrates with **Dynamics 365** and **Teams** for work order management.
- Allows **remote optimization** of operations via **Azure IoT Edge** and **IoT Hub**.

Automating the World

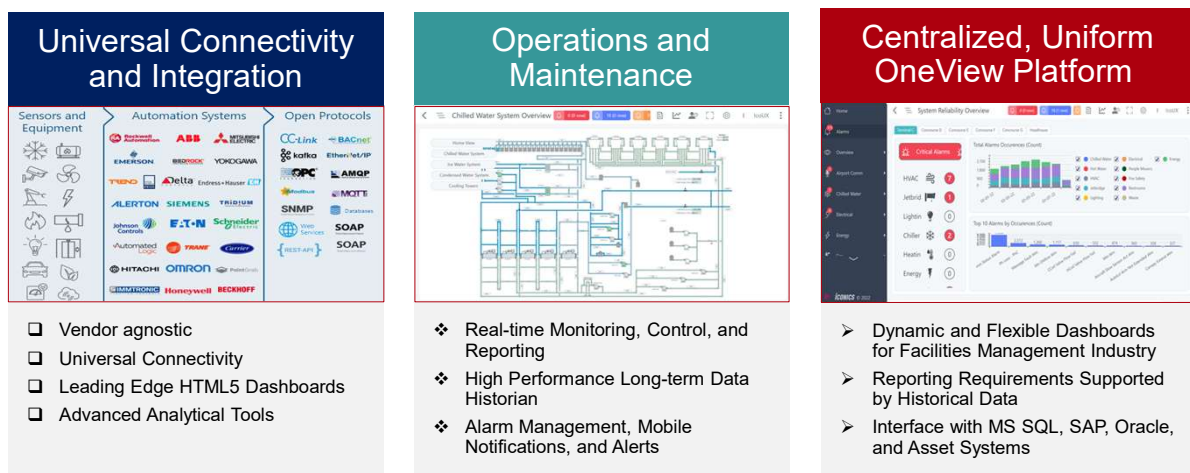
COPYRIGHT © 2022 Mitsubishi Electric. ALL RIGHTS RESERVED. ALL TRADEMARKS ACKNOWLEDGED.

28

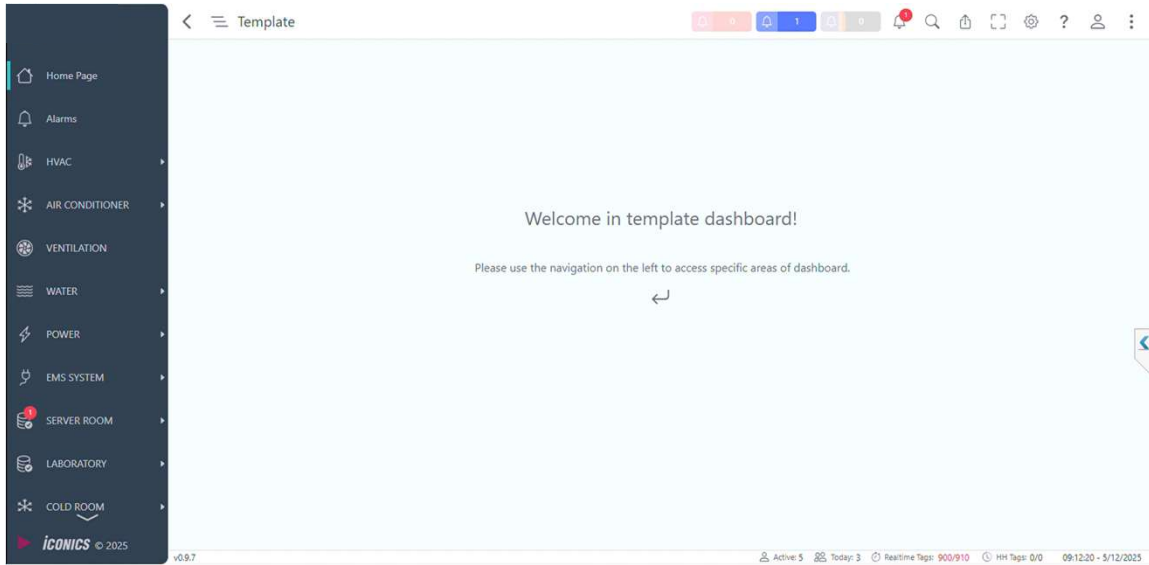
Intelligent Buildings Universal Connectivity



Smart Building Solutions



4. Typical Control Graphics – Home Page



Welcome in template dashboard!

Please use the navigation on the left to access specific areas of dashboard.

Active: 5 Today: 3 Realtime Tags: 900/910 HH Tags: 0/0 09:12:20 - 5/12/2025

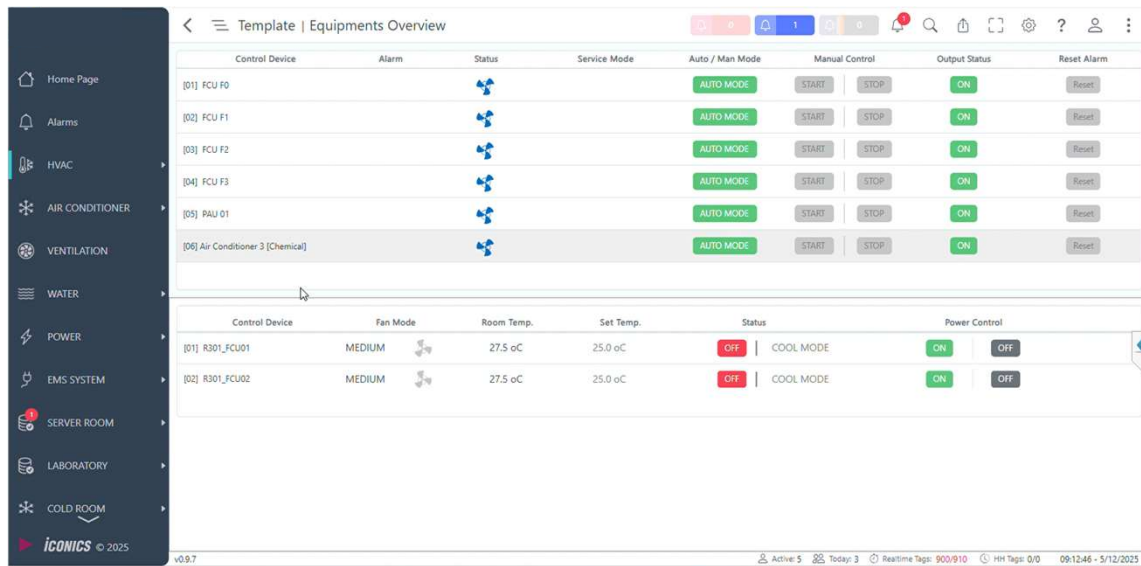
4. Typical Control Graphics – Alarm



Time / Date	Priority	Type	Device Name	Description	Alarm Note	Quality	Tag
5/2/2025 11:43:32	1	Normal		(Pa) is Normal. The process value is 252		Good	/lac/lcoD58/Oucnu/Laboratory/SensorDev/Sensor_60Alarm Hi
5/5/2025 21:51:18	2	Normal		CRAC_01 is Standby		Good	/lac/lcoD58/Oucnu/ServerRoom/CRAC/CRAC_01.unitsstatus
5/7/2025 09:32:50	2	Alarm		CRAC_02 is Running		Good	/lac/lcoD58/Oucnu/ServerRoom/CRAC/CRAC_02.unitsstatus
5/4/2025 18:00:02	2	Normal		CRAC2 kết thúc lệnh OFF		Good	/lac/lcoD58/Oucnu/ServerRoom/CRAC/CRAC_02.remotetoff
5/6/2025 14:47:06	1	Normal		Nhiệt độ phòng server bình thường		Good	/lac/lcoD58/Oucnu/ServerRoom/Room Sensor.Temp
5/4/2025 18:00:03	2	Normal		CRAC1 kết thúc lệnh ON		Good	/lac/lcoD58/Oucnu/ServerRoom/CRAC/CRAC_01.remotetion
4/18/2025 19:07:00	1	Normal		ML Vi Sinh Normal		Good	/lac/lcoD58/Oucnu/AirConditioner/AmpMeter/AmpMeter_F0A01.Alarm
4/18/2025 15:34:14	1	Normal		(Pa) is Normal. The process value is 201.6		Good	/lac/lcoD58/Oucnu/Laboratory/SensorDev/Sensor_57Alarm Hi
4/24/2025 10:38:46	1	Normal		(Pa) is Normal. The process value is 491.9		Good	/lac/lcoD58/Oucnu/Laboratory/SensorDev/Sensor_39Alarm Hi
5/4/2025 06:00:01	2	Normal		CRAC2 kết thúc lệnh ON		Good	/lac/lcoD58/Oucnu/ServerRoom/CRAC/CRAC_02.remotetion
5/4/2025 06:00:02	2	Normal		CRAC1 kết thúc lệnh OFF		Good	/lac/lcoD58/Oucnu/ServerRoom/CRAC/CRAC_01.remotetoff
4/18/2025 15:07:14	1	Normal		(Pa) is Normal. The process value is 155.7		Good	/lac/lcoD58/Oucnu/Laboratory/SensorDev/Sensor_61Alarm Hi

Active: 5 Today: 3 Realtime Tags: 900/910 HH Tags: 0/0 09:12:31 - 5/12/2025

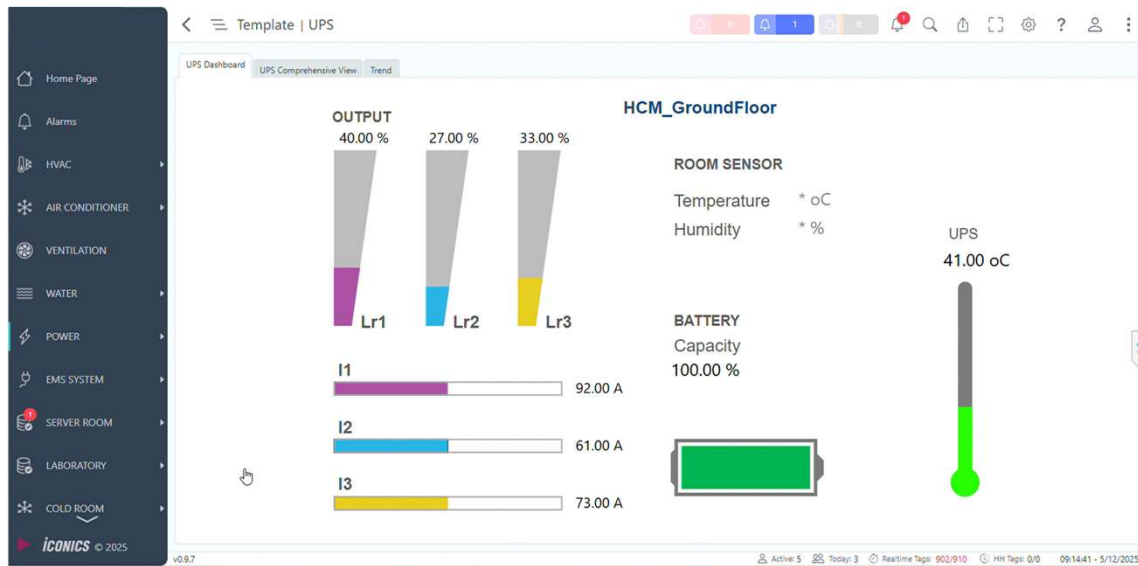
4. Typical Control Graphics – FCU



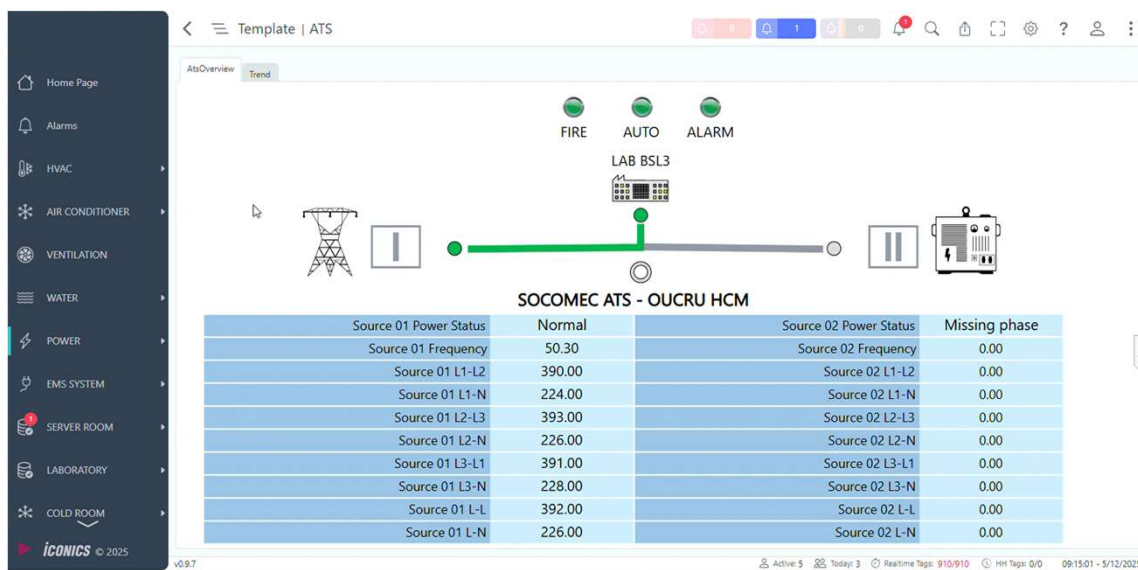
4. Typical Control Graphics – Chiller



4. Typical Control Graphics – UPS



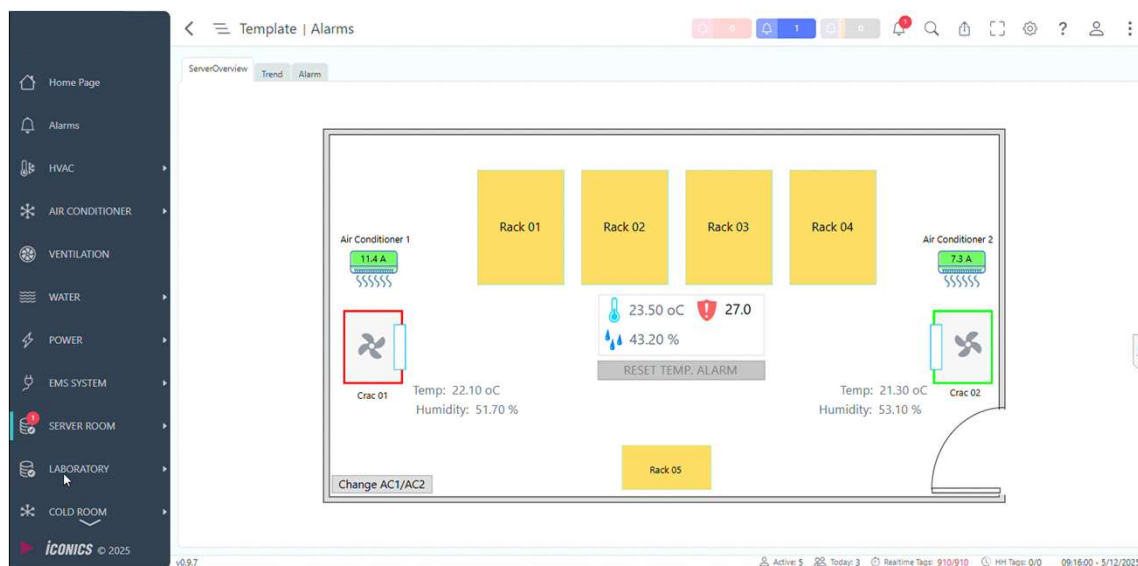
4. Typical Control Graphics – ATS



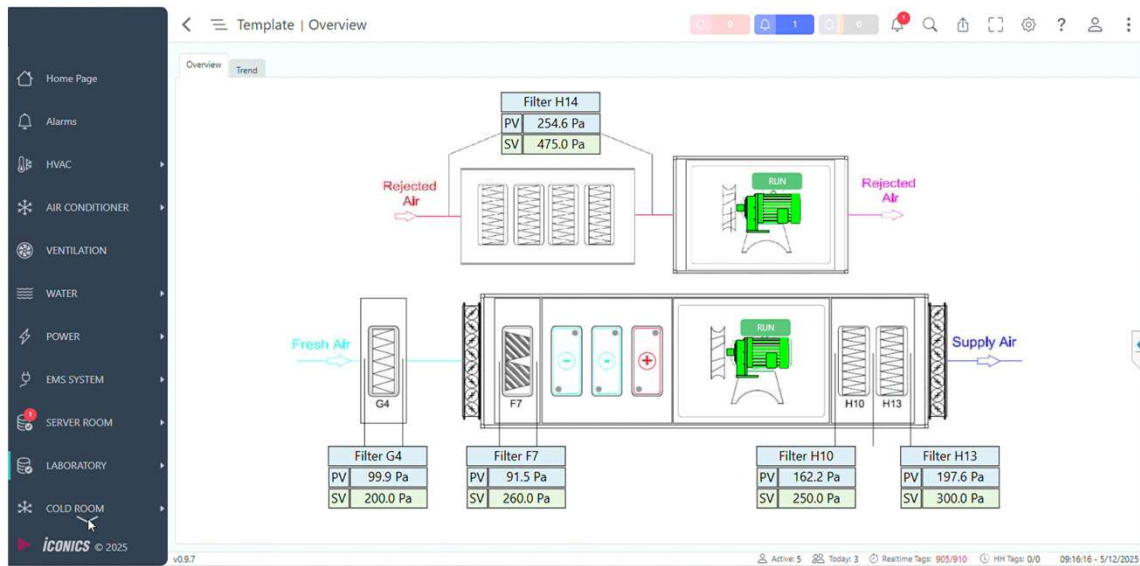
4. Typical Control Graphics – EMS



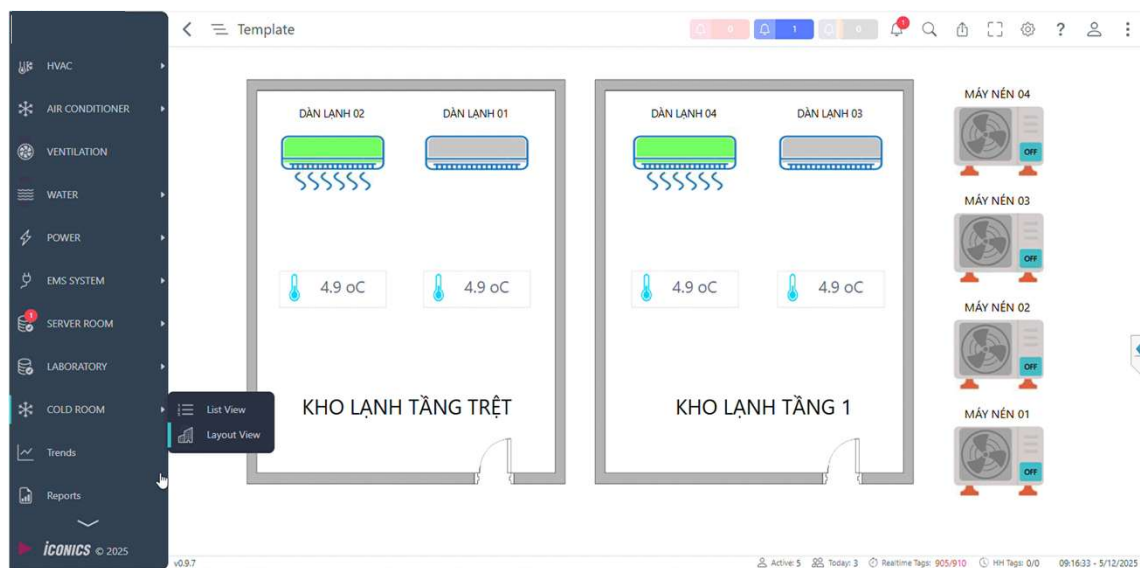
4. Typical Control Graphics – Server Room



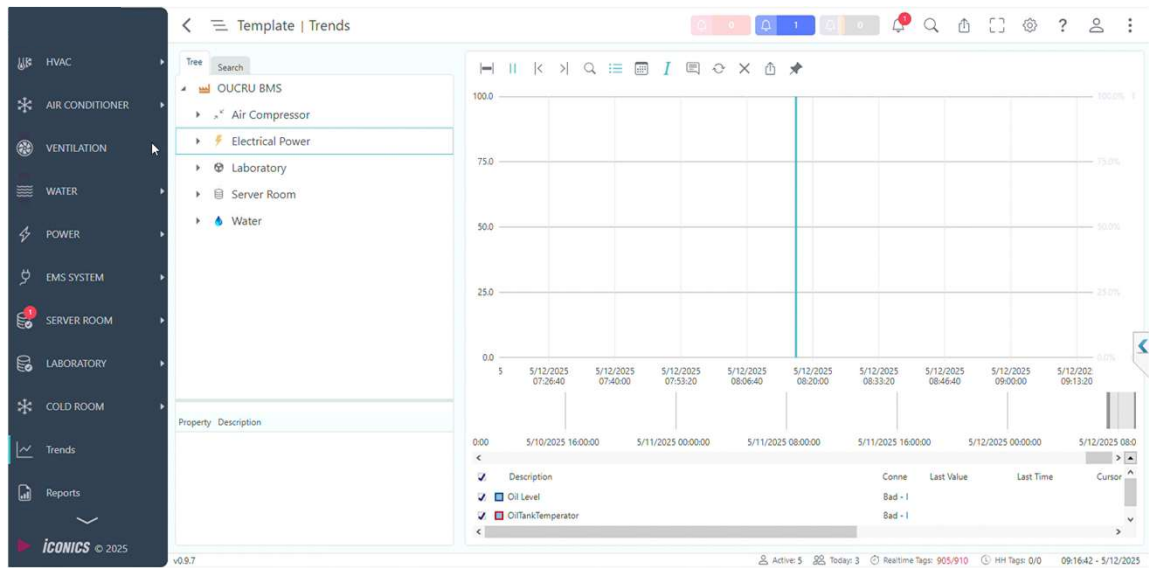
4. Typical Control Graphics – Laboratory



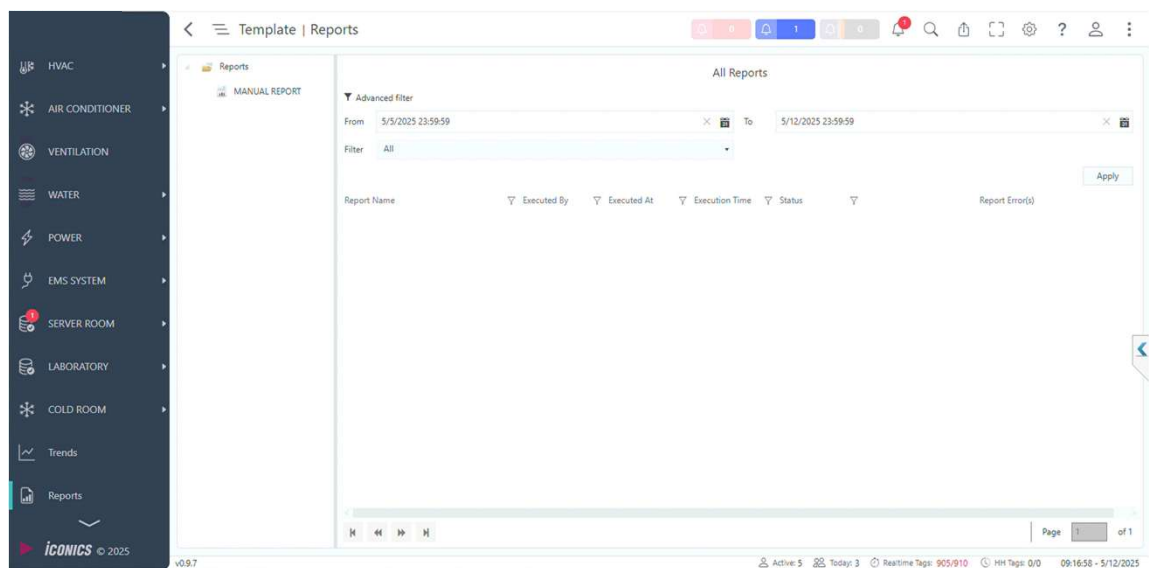
4. Typical Control Graphics – Cold Room



4. Typical Control Graphics – Trend



4. Typical Control Graphics – Report



5. Project References



Toyota My Dinh

- **Owner:** Investment and Development Management Joint Stock Company (IDMC)
- **Location:** 15 Pham Hung, My Dinh 2 Ward, Nam Tu Liem, Hanoi
- **Project size:** 3 basements + 20 floors above ground
- **Service:** BMS
- **Year of completion:** 2019



OUCRU


- **Owner:** The Oxford University Clinical Research Unit
- **Location:** 764 Vo Van Kiet Street, Ward 1, District 5, Ho Chi Minh City
- **Project size:** Research area
- **Service:** BMS
- **Year of completion:** 2024

Thank You!


NGUYEN DUC HUY
Factory Automation/ Solution Sales Section


HP : +84 34 8174 214
E-Mail: nguyenduc.huy@mevn.com.vn


MITSUBISHI ELECTRIC VIETNAM CO., LTD
Viettel Tower, 285 CMT8 Street, Ward 12, District 10, HCM, VN
www.mitsubishi-electric.vn





Please keep in touch:


 www.MitsubishiElectric.com/FA

 Mitsubishi Electric FA Global

 Mitsubishi Electric FA Global
@MitsubishiElectricFAGlobal


 Mitsubishi Electric FA Global
@Mitsubishi_FA

 MITSUBISHI ELECTRIC Factory Automation Global



COPYRIGHT © 2022 Mitsubishi Electric. ALL RIGHTS RESERVED. ALL TRADEMARKS ACKNOWLEDGED.

47



Legal Disclaimer (must not be removed)

The contents of this document are provided as illustrative subject matter. No license, expressly or implied to any intellectual property rights is granted by this document. With regard to the products and services of Mitsubishi Electric referred to within this document, Mitsubishi Electric and its group companies assume no liability whatsoever and disclaim any express or implied warranty, relating to the use and/or sale of those products and services including liability or warranties relating to fitness for purpose, or infringement of any intellectual property right such as, but not limited to, patents, copyrights etc. except as provided by Mitsubishi Electric's terms and conditions of sale for those products and services.

All dates, figures, product specifications, service data, are based on Mitsubishi Electric's current understanding and are subject to change without notice.

Due to copyright controls around the images used in this presentation on no account may any of the images be copied, extracted, edited or otherwise reused and disseminated separately. If you have any questions regarding this please contact Mitsubishi Electric Corporation, 2-7-3 Marunouchi, Chiyoda-Ku, Tokyo, Industry & Mobility BA Strategy Office, Strategic Operations Office, Factory Automation Digital Marketing Center, Planning Group Manager.

Where forward looking statements and proposals are provided these are based on Mitsubishi Electric's current expectations and are subject to risks and uncertainties that affect their validity, for example, but not limited to:

- the availability of information disclosed to Mitsubishi Electric
- changes in the state of the general business and economic environment
- effects triggered by changes in currency exchange rates and interest rates
- the development and adoption of new technologies
- the introduction and acceptance of new products and services

Other customers of Mitsubishi Electric may be listed within this documentation as illustrative examples, Mitsubishi Electric does not make any representations or endorsements of the products or services of those customers.


Mitsubishi Electric believe that an intrinsic part of building automation solutions is the ability to work with partners and third party company products, however, where such companies, their products and/or services are referred to, Mitsubishi Electric does so in good faith but expressly does not make representations or warranties regarding their quality, reliability, functionality, compatibility or general suitability. Such references to third party companies, products and services may change without notice.

Other names, trademarks, brands may be claimed as the property of others and as such are acknowledged.

Mitsubishi Electric, e-F@ctory, MELSEC, MELSERVO, FREQROL, MELFA, IQ Platform, Automating the World, and their associated logos are trademarks of Mitsubishi Electric Corporation in Japan and/or other countries.

Copyright © Mitsubishi Electric Corporation.
All rights reserved.

It is not allowed to delete this disclaimer from the slide deck – the slide deck will be accompanied by an original version in PDF format for reference.



COPYRIGHT © 2022 Mitsubishi Electric. ALL RIGHTS RESERVED. ALL TRADEMARKS ACKNOWLEDGED.

48

